

BEST OF THE BEATLES

(A medley including: Ticket To Ride • Hey Jude • Get Back)

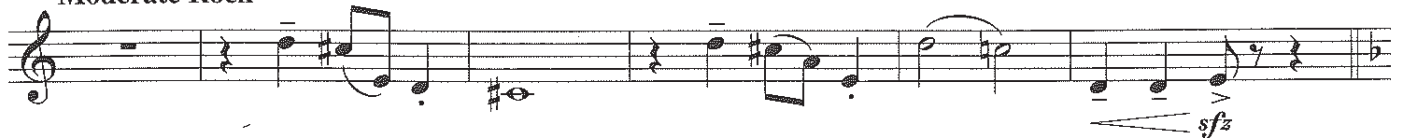
B \flat CLARINET 1

Words and Music by
JOHN LENNON and PAUL McCARTNEY
Arranged by JOHN MOSS

Chorale-like

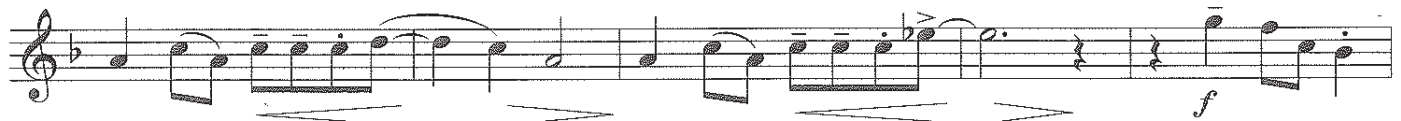
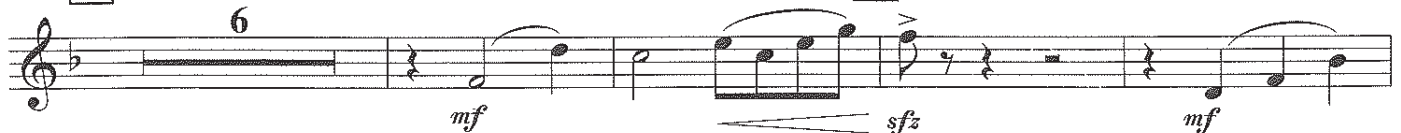


Moderate Rock



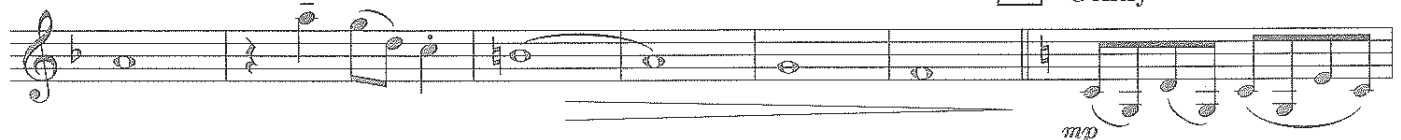
11 "Ticket To Ride"

19



"Hey Jude"

32 Gently



40



TICKET TO RIDE
Words and Music by JOHN LENNON and PAUL McCARTNEY
Copyright © 1965 Sony/ATV Songs LLC
Copyright Renewed
This arrangement Copyright © 2003 Sony/ATV Songs LLC
All Rights Administered by Sony/ATV Music Publishing,
8 Music Square West, Nashville, TN 37203
International Copyright Secured All Rights Reserved

HEY JUDE
Words and Music by JOHN LENNON and PAUL McCARTNEY
Copyright © 1968 Sony/ATV Songs LLC
Copyright Renewed
This arrangement Copyright © 2003 Sony/ATV Songs LLC
All Rights Administered by Sony/ATV Music Publishing,
8 Music Square West, Nashville, TN 37203
International Copyright Secured All Rights Reserved

GET BACK
Words and Music by JOHN LENNON and PAUL McCARTNEY
Copyright © 1969 Sony/ATV Songs LLC
Copyright Renewed
This arrangement Copyright © 2003 Sony/ATV Songs LLC
All Rights Administered by Sony/ATV Music Publishing,
8 Music Square West, Nashville, TN 37203
International Copyright Secured All Rights Reserved

B \flat CLARINET 1

53

mf

poco poco

ff

Detailed description: This block contains two staves of music. The first staff starts with a treble clef and a key signature of one flat. It begins with a whole rest, followed by a half note G \flat , a quarter note F \flat , and a quarter note E \flat . A dynamic marking of *mf* is placed below the staff. The second staff continues the melody with eighth notes and quarter notes, ending with a double bar line and two *poco poco* markings above the staff. A dynamic marking of *ff* is placed below the staff.

61 Driving Rock

65 "Get Back"
Play 2nd time only

f

mf

Detailed description: This block contains two staves of music. The first staff starts with a treble clef and a key signature of one flat. It begins with a whole rest, followed by a half note G \flat , a quarter note F \flat , and a quarter note E \flat . A dynamic marking of *f* is placed below the staff. The second staff continues the melody with eighth notes and quarter notes, ending with a double bar line and a first ending bracket. A dynamic marking of *mf* is placed below the staff.

73

Play both times

f

1.

2.

ff *a tempo* *mf*

Detailed description: This block contains three staves of music. The first staff starts with a treble clef and a key signature of one flat. It begins with a whole rest, followed by a half note G \flat , a quarter note F \flat , and a quarter note E \flat . A dynamic marking of *f* is placed below the staff. The second staff continues the melody with eighth notes and quarter notes, ending with a double bar line and a first ending bracket. A dynamic marking of *f* is placed below the staff. The third staff continues the melody with eighth notes and quarter notes, ending with a double bar line and a first ending bracket. A dynamic marking of *ff* is placed below the staff, followed by *a tempo* and *mf*.

87

f *sfz* *mf*

poco

fp *ff* *mp* *ff* *sfz*

Detailed description: This block contains two staves of music. The first staff starts with a treble clef and a key signature of one flat. It begins with a whole rest, followed by a half note G \flat , a quarter note F \flat , and a quarter note E \flat . A dynamic marking of *f* is placed below the staff. The second staff continues the melody with eighth notes and quarter notes, ending with a double bar line and a first ending bracket. A dynamic marking of *sfz* is placed below the staff, followed by *mf*. The third staff continues the melody with eighth notes and quarter notes, ending with a double bar line and a first ending bracket. A dynamic marking of *fp* is placed below the staff, followed by *ff*, *mp*, *ff*, and *sfz*.